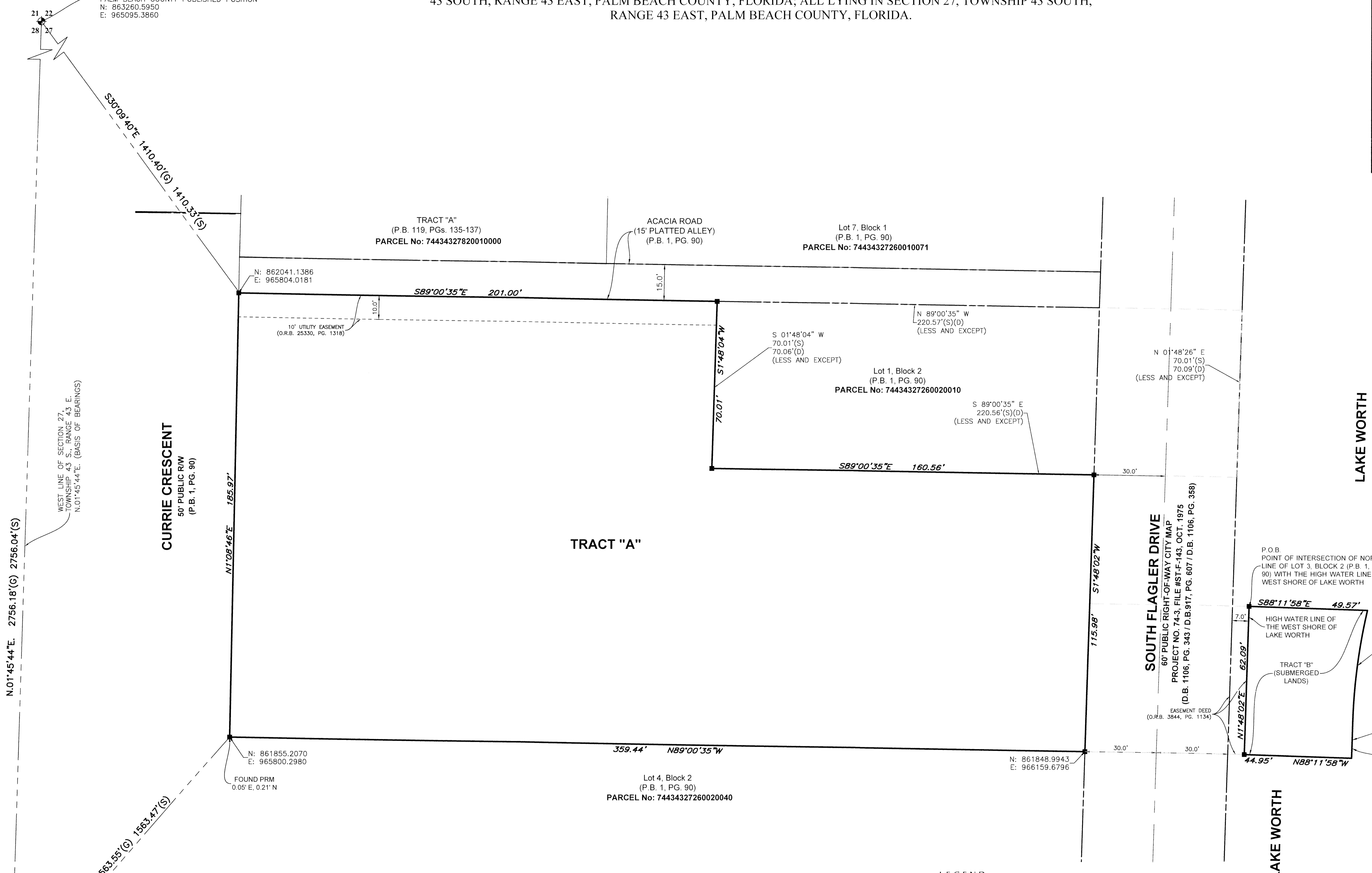


# FLAGLER FORTE RESIDENCES

BEING, A REPLAT OF LOTS 1, 2 AND 3, BLOCK 2, JEFFERSON PARK, RECORDED IN PLAT BOOK 1, PAGE 90, OF THE PUBLIC RECORDS OF PALM BEACH COUNTY, FLORIDA, TOGETHER WITH A PORTION OF SECTION 27, TOWNSHIP 43 SOUTH, RANGE 43 EAST, PALM BEACH COUNTY, FLORIDA; ALL LYING IN SECTION 27, TOWNSHIP 43 SOUTH, RANGE 43 EAST, PALM BEACH COUNTY, FLORIDA.

NORTHEAST CORNER SECTION 28, TOWNSHIP 43 S., RANGE 43 E. NOT FOUND  
PALM BEACH COUNTY PUBLISHED POSITION  
N: 863260.5950  
E: 965095.3860



WEST LINE OF SECTION 27, TOWNSHIP 43 S., RANGE 43 E. N.01°45'44"E. (BASIS OF BEARINGS)

N.01°45'44"E. 2756.18'(G) 2756.04'(S)

N.01°45'44"E. 2756.18'(G) 2756.04'(S)

WEST LINE OF SECTION 27, TOWNSHIP 43 S., RANGE 43 E. N.01°45'44"E. (BASIS OF BEARINGS)

N.01°45'44"E. 2756.18'(G) 2756.04'(S)

EAST QUARTER SECTION 28, TOWNSHIP 43 S., RANGE 43 E. NOT FOUND  
PALM BEACH COUNTY PUBLISHED POSITION  
N: 860505.7200  
E: 965010.6300

N.30°20'04"E. 1963.55'(G) 1963.47'(S)

STATE PLANE COORDINATE NOTES:  
a. ALL DISTANCES ARE GROUND  
b. SCALE FACTOR= 1.0000505  
c. COORDINATE SYSTEM = 1983 STATE PLANE TRANSVERSE MERCATOR PROJECTION  
COORDINATES SHOWN ARE GRID COORDINATES  
d. ZONE = FLORIDA EAST ZONE  
e. DATUM = NAD 83-1990 ADJUSTMENT  
f. GROUND DISTANCE X SCALE FACTOR = GRID DISTANCE  
g. LINEAR UNIT = U.S. SURVEY FEET  
h. PLAT BEARINGS = GRID BEARINGS  
NO ROTATION

LEGEND

P.O.B. -----	Point of Beginning	(S) -----	Ground Distance
O.R./O.R.B. -----	Official Records Book	(G) -----	Grid Distance
D.B. -----	Deed Book	W.M.T. -----	Water Management Tract
P.B. -----	Plat Book	U.E. -----	Utility Easement
Pg(s) -----	Page(s)	D.E. -----	Drainage Easement
P.U.D. -----	Planned Unit Development	R -----	Radius
M.U.P.D. -----	Multi-Use Planned Development	L -----	Arc Length
R/W -----	Right-of-Way	D -----	Delta-Central Angle
PC -----	Point of Curvature	F.P.&L. -----	Florida Power and Light
PT -----	Point of Tangency	■/PRM -----	Set Permanent Reference Monument, a 1 1/2" Brass disk Stamped "PRM LB7768" in a 4"x4" Concrete Monument
O.S.T. -----	Open Space Tract		

GeoPoint  
Surveying, Inc.  
4152 W. Blue Heron Blvd. Suite 105  
Riviera Beach, FL 33404  
Phone: (561) 444-2720  
www.geopointsurvey.com  
Licensed Business Number LB 7768  
Sheet No. 2 of 2 Sheets